

Child Poverty in Nottingham

National Policy

- The Child Poverty Bill was introduced to the House of Commons on 11 June 2009 and obtained Royal Assent on 25 March 2010.
- The Act requires the Secretary of State to meet four targets to eradicate child poverty by 2020. It requires a strategy every three years (first being in spring 2011) to meet these targets and report annually on progress.
- The Act is jointly sponsored by the Department for Education, the Department for Work and Pensions, and Her Majesty's Treasury.
- The Government is now launching a consultation on a new way of measuring child poverty (although it is still committed to eradicating it).
- This consultation considers measuring poverty not just by income but also introducing a number of extra dimensions such as debt levels, poor housing, parental skills, family stability, parental health.

Nottingham Poverty Data

- Nottingham has 34.5% of children in poverty. Over 21,000 children (9th highest rate in England)
 - Aspley, St. Ann's & Bulwell have highest rates of children in Workless Households
 - Child poverty is below 60% median income before housing costs
 - Source:- <http://www.education.gov.uk/childrenandyoungpeople/families/childpoverty/b0066347/child-poverty-data>
- Nottingham has 23% of children in severe poverty (6th highest in England)
 - Recommended by Frank Field's Independent Review, severe poverty measures households where income is below 50% of median income and material deprivation is experienced. Material deprivation defined as where both adults and children lack at least one or two basic necessity. Affects the ability to carry out basic decoration, have household appliances repaired, buy home contents insurance, save a small amount or have a weeks holiday.
 - Source:- <http://www.savethechildren.org.uk/resources/online-library/severe-child-poverty-nationally-and-locally>
- A further 21,800 children live in 'low income' households (35.8%)
 - Dales, Leen Valley & Berridge have highest rates of children in 'Low Income' households
 - Low Income households are those working and claiming both the Child Tax Credit and Working Tax Credit – snapshot data previously provided by HMRC indicated that within Nottingham 90% of these households had incomes below £16,500 and 50% below £9,325
 - Source:- <http://www.hmrc.gov.uk/stats/personal-tax-credits/final-award-geog.htm>

Nottingham Poverty Data

2010/11 Nottingham & Comparator data

Children in workless households	No.	%
Nottingham City	21,000	34.5
Broxtowe	3,200	14.7
Gedling	3,600	15.1
Rushcliffe	1,900	7.7
Greater Nottingham*	29,700	22.6
<i>% In City</i>	<i>70.7</i>	
East Midlands	181,100	18.3
England	2,340,400	20.0

Nottingham accounts for 70% of children living in workless households in Greater Nottingham





Nottingham data over time

Children in workless households	Number	%
2005/06	20,300	33.7
2006/07	20,200	33.7
2007/08	19,960	33.1
2008/09	21,030	34.7
2009/10	21,300	35
2010/11	21,000	34.5

Children in workless households have increased slightly but those in low income have increased faster. Indicate a more people moving to part time and low paid employment

Children in low ioncome households	Number	%
2005/06	17,570	29.2
2006/07	18,230	30.4
2007/08	19,230	31.9
2008/09	20,390	33.7
2009/10	21,100	34.6
2010/11	21,800	35.8

Summary of Performance against the Child Poverty-Related Indicators

	2007/08	2008/09	2009/10	2010/11	2011/12	DOT
Employment rate	63.7%	59.9%	53.6%	59.1%	60.0%	
% of adults with at least Level 2 qualifications	55.6%	61%	61.4%	66.7%	tbc	
The teenage pregnancy rate (per 1000 pop.)	73.6	69.3	61.9	61.6	54.3	
% of pupils achieving 5 or more A*-C GCSEs including English and Maths	34.7%	41.4%	44.2%	46.7%	49.1%	

ACTIVITY TO TACKLE CHILD POVERTY

Children & Families key activity

- Dept for Education Early Years 2 year old programme – 1,400 free places for 2 year olds, 15 hours per week, starting Sept 2013
- Dept Work & Pensions Working Links programme for families with multiple issues c.200 referrals initiated and starting programme
- Dept for Communities Priority Families programme will work with 1,200 over next 3 years – operational rollout across priority wards underway
- Parenting programmes run by Family Community Teams have been attended by 475 individuals from 270 families over the last year
- 2 x Mentoring/befriending services – Homestart and Family Lives – both use volunteers to support families with children who are experiencing difficulties. They offer social, emotional and practical support in the home as well as group sessions and workshops. Over 250 families supported last year.

Tackling Teenage Pregnancy

- Education for young people about sex and relationships: Healthy Schools Initiative.
- Provision of appropriate and targeted contraceptive and sexual health services: School Nurses; Outreach; 'Your Welcome'.
- Working with teenage parents to help break the cycle of disadvantage: Family Nurse Partnership; Family Community Teams.

Nottingham Plan

By 2020 Nottingham will be a **City of Aspiration**. Children and adults will have high expectations of themselves and their future and the motivation and abilities to follow through their ambitions

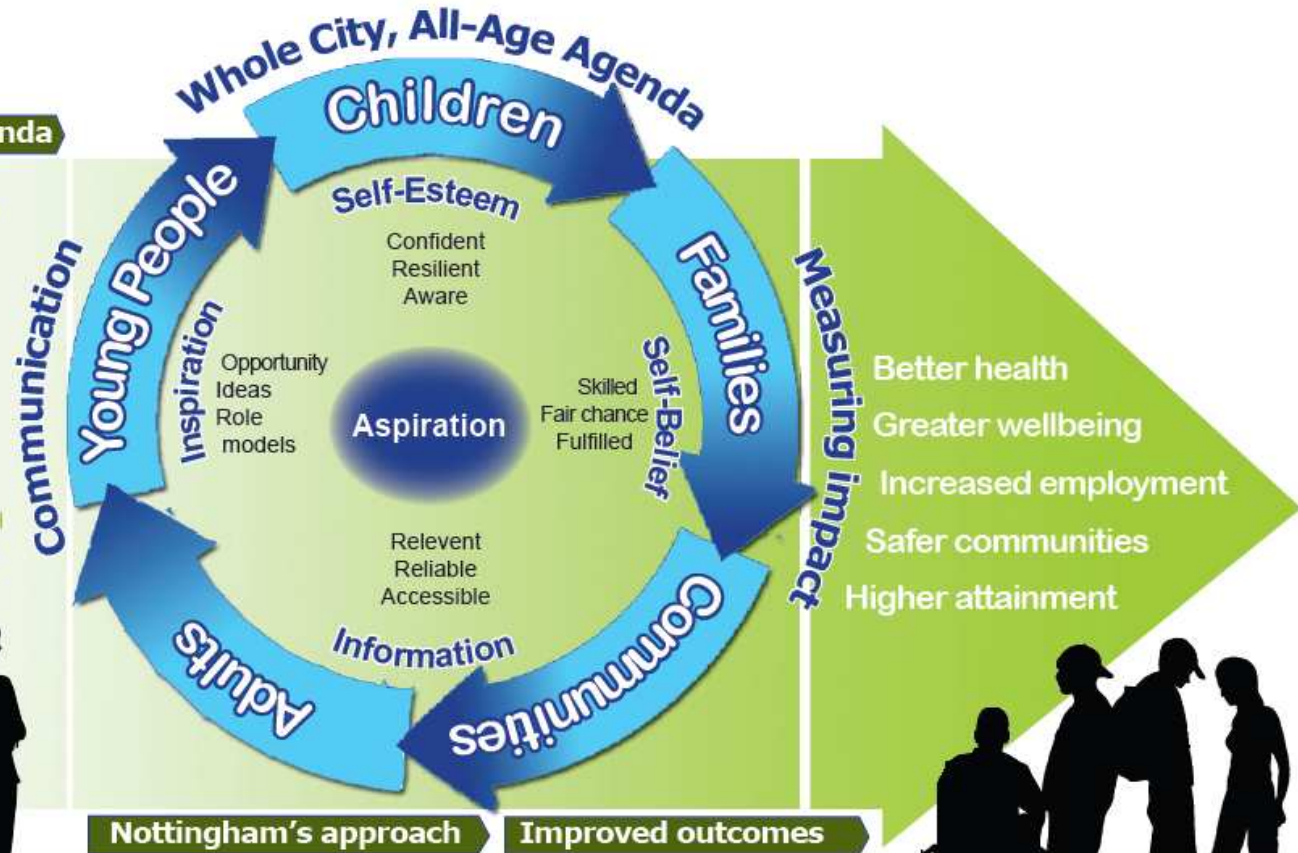
The Nottingham Plan 2020

Aspirations agenda

An inspiring, motivated workforce

Inspired communities connected to Nottingham's future

People with positive goals and the personal skills to achieve them



Our approach is to put what we have learnt about raising aspiration at the heart of existing services. Adapting ways of working so we can ensure that high aspiration drives better outcomes for all.

Employment & Skills

2012/13 Key Initiatives

- 'Employer Hub' – Employer Hub established to provide a recruitment service for City Employers and match local people to local jobs
- 200 individuals into employment since 1st April 2012 (including 43 apprenticeships).
- The Employer Hub has 2.5 dedicated staff. It is funded by a combination of council funding, employer contribution (section 106) and income from the DWP Innovation Fund. Funded until March 2015
- Section 106 - Over 1,000 employment opportunities agreed with developers. £105K received from developers. 139 city residents placed in employment since April 2012.
- Procurement - Inclusion of E & T questions in tendering process for goods and services over £200K.

Employment & Skills 2012/13 Key Initiatives

- Nottingham Jobs Fund - Established in 2011 and funded until March 2014 (£2.2m)
- Designed to encourage employers to create new jobs for unemployed young people in the city.
- 53 placed in employment since 1st April (82 in total). 36 jobs vacancies live at the JCP.
- Community Engagement – Over 5,000 jobs seekers attended the 2012 Community Jobs Fairs (incl: the Nottingham Jobs Fair on 25th Sept). Predicted to generate 500+ jobs
- Innovation Fund - Futures are working with 866 young people at present and over 500 have been placed in learning provision or work.

Disability

- A joint report with The Children's Society and Disability Rights UK on the findings of an inquiry led by Baroness Tanni Grey-Thompson. Whilst many people may be better off under universal credit, this inquiry identified that several key groups would lose out financially under the new system. Up to half a million disabled people could lose out under universal credit once it is fully implemented. This includes:
 - 230,000 severely disabled people nationally who live alone, or with only a young carer – usually lone parents with school age children – will get between £28 and £58 less in benefits every week.
 - up to 116,000 disabled people nationally who work will be at risk of losing around £40 a week.
 - Existing claimants will not lose out immediately as their current levels of benefit will be protected at point of transfer to universal credit. However, they will have their level of benefit frozen with no increases to take account of rising prices and they may see their support cut immediately if their household circumstances change. New claimants will be affected by this cut immediately.